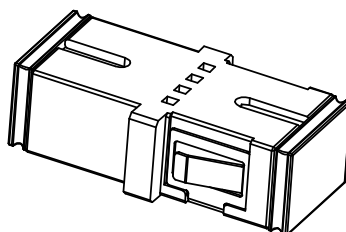
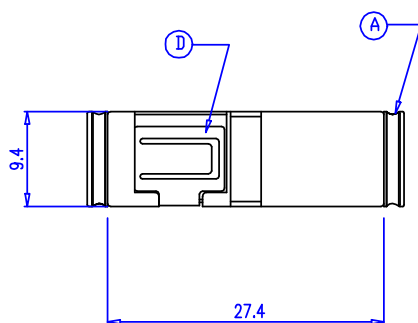
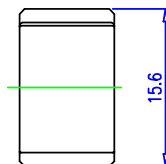
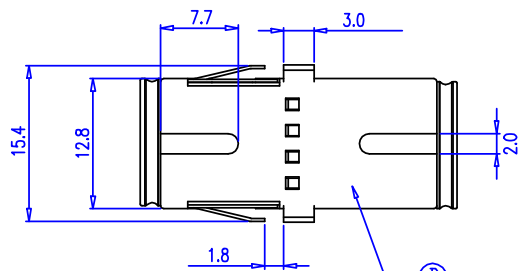


THE INFORMATION CONTAINED HEREON IS PROPRIETARY AND CONFIDENTIAL TO DYNACOM CORPORATION. AND SHALL NOT BE USED OR DISCLOSED, IN WHOLE OR IN PART WITHOUT FIRST OBTAINING THE WRITTEN PERMISSION OF DYNACOM CORPORATION. SPECIFICATIONS SUBJECT TO CHANGE WITHOUT NOTICE.

ZONE	REV.	DESCRIPTION	DATE	APPV.
-	A	INITIAL RELEASE	11/25/2020	E.A.
-	B			
-	C			
-	D			



Standards: EIA/TIA-604-3A

Precision Mechanical Dimensions Ensuring Consistent and Reliable Performance.
INSERTION LOSS:

≤ 0.20dB typical MM

≤ 0.20dB typical SM

MECHANICAL ENDURANCE:

500 cycles, Δ Insertion Loss < 0.20 dB

OPERATING TEMPERATURE:

-40°F to +185°F

STORAGE TEMPERATURE:

-40°F to +185°F

D	HOLDER	STAINLESS	1
C	SLEEVE	Zirconia Sleeve	2
B	ADAPTER HOUSING	PEI	2
A	CAP	TPP	2
NO.	BILL OF MATERIALS	MATERIAL	QTY

P/N	Housing Color	Connector Polish	Mode
930-SC-MM-6	AQUA	UPC	OM3, OM4
930-SC-SM-6	BLUE	UPC	OS2
930A-SC-SM-6	GREEN	APC	OS2

PACKAGE: 6/BAG



e-mail....sales@dynacomcorp.com
www.dynacomcorp.com

DIMENSIONS: MM

NEXT ASSY: -

DRAWN: E.A.

CHECKED: A.L.

TITLE

FIBER OPTIC COUPLER - SC

DWG. NO.

930-SC

SHEET 1 OF 1

REV.

A