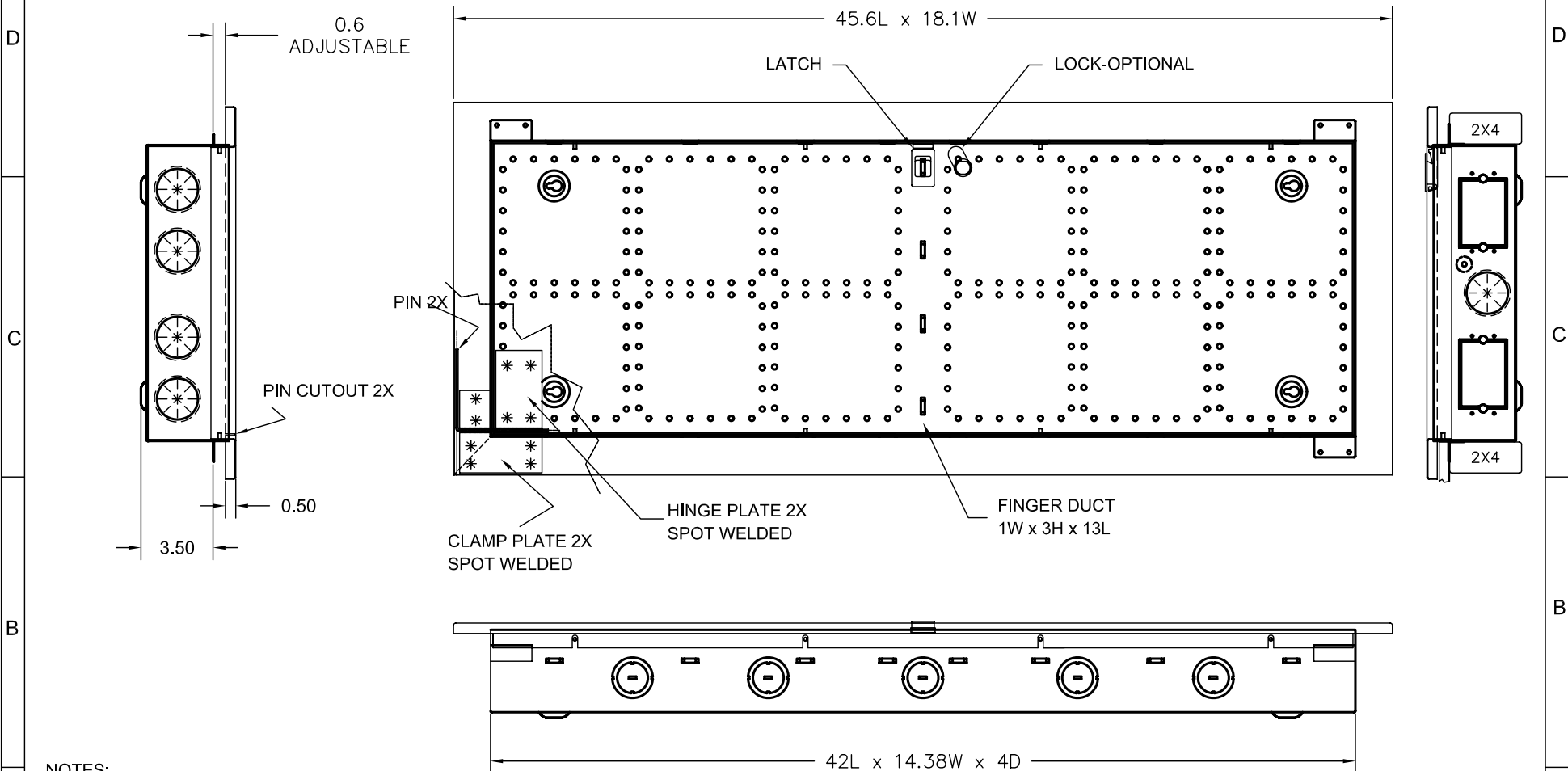


THE INFORMATION CONTAINED HEREON IS PROPRIETARY AND CONFIDENTIAL TO DYNACOM CORPORATION. AND SHALL NOT BE USED OR DISCLOSED, IN WHOLE OR IN PART WITHOUT FIRST OBTAINING THE WRITTEN PERMISSION OF DYNACOM CORPORATION.

ZONE	REV	DESCRIPTION	DATE	APPV.
-	A	INITIAL RELEASE	12/17/07	E.A.
-	B	COVER PATTERN REMOVED.	03/10/08	E.A.



NOTES:

1. MATERIAL: 18G (0.048 INCHES) COLD ROLLED STEEL
1. FINISH: ZINC PLATE & POWDER COAT, COLOR WHITE.
2. P/N: 800-F42-B CABINET BODY, 42"
3. P/N: 800-F42-D CABINET DOOR & BEZEL, 42"



e-mail.....info@dynacomcorp.com  
 1366 San Mateo Ave Suite 201  
 South San Francisco CA 94080

ALL DIMENSIONS ARE IN INCHES.			
NEXT ASSY: -	DRAWN: E.A. 12/17/07	CHECKED: -	
TITLE:	<b>42" ENCLOSURE LAYOUT</b>	<b>800-F42-B/D</b>	REV. <b>B</b>