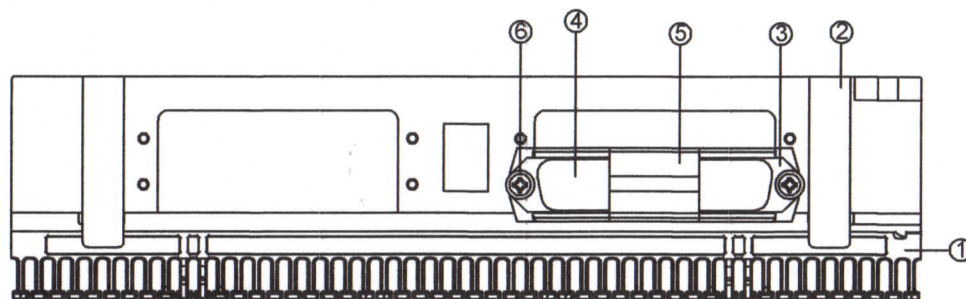


THE INFORMATION CONTAINED HEREON IS PROPRIETARY AND CONFIDENTIAL TO DYNACOM CORPORATION. AND SHALL NOT BE USED OR DISCLOSED, IN WHOLE OR IN PART WITHOUT FIRST OBTAINING THE WRITTEN PERMISSION OF DYNACOM CORPORATION.

ZONE	REV.	DESCRIPTION	DATE	APPV.
-	A	INITIAL RELEASE	07/08/2014	E.A.



NO.	Description	Part Number	Qty
⑥	TP3*10	LP2065	2
⑤	CONNECTOR	LS000129-ROHS	1
④	50 PIN W	NRLH700065	1
③	50 PIN W		1
②	R89D	LP1159	1
①	66BLOCKW	NR3066M-350-154	1

ENVIRONMENTAL CONDITIONS

Temperature Range
Storage -40 to +70°C
Operation -10 to +60°C
Relative Humidity (Operational) : Maximum
Noncondensing 93%

ELECTRICAL

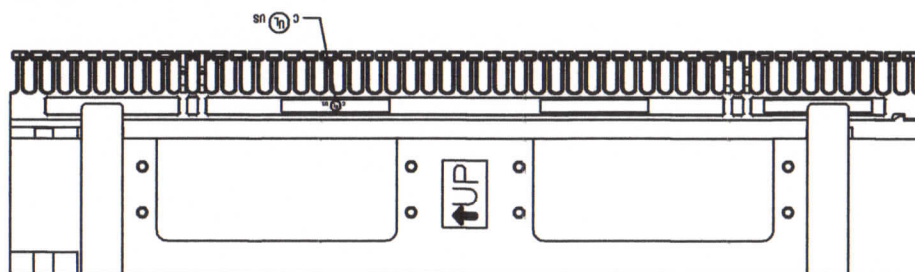
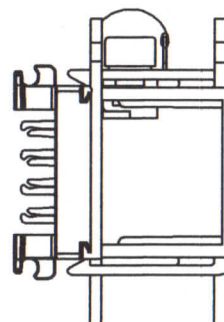
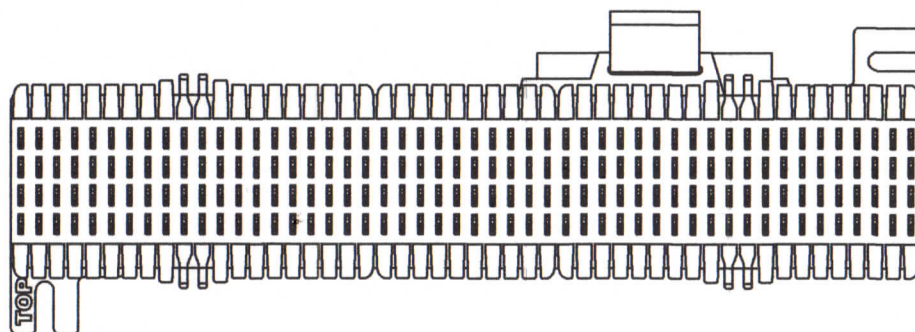
Electrical Insulation Resistance : 500 M Ω
min. @ 100V d.c
Dielectric Withstanding Voltage : 1000V RMS @
60Hz for 1 minute
Contact Resistance : 2.5 m Ω Max.
Current Rating : as figure.

MECHANICAL

Transverse Exaction Force:
Minimum 5N for 24AWG
Minimum 3N for 26AWG
Insertion / Extraction Life : 200 Cycles
Minimum
IDC Wire Gauge : 22 ~ 26 AWG

PHYSICAL

Housing : High-Impact, Flame-Retardant
Plastic, UL 94V0
IDC : Brass Plated With 100 micro-inch of Sn.
50pin Housing : Thermoplastic.
Terminals : Gold Over Nickel Plated High
Strength Copper Alloy.



e-mail....sales@dynacomcorp.com
www.dynacomcorp.com

TOLS ~ 20MM \pm 0.2MM, OVER 20MM TO 60MM \pm 0.4MM, OVER 60MM \pm 0.8MM. ANGLES \pm 1 DEG

NEXT ASSY: -

DRAWN: E.A. 07/08/2014

CHECKED: EA

TITLE 66 Block, 50-Pair Block with
one Female Telco Connector

DWG. NO. 66B1F

SHEET 1 OF 1

REV.
A

THE INFORMATION CONTAINED HEREON IS PROPRIETARY AND CONFIDENTIAL TO DYNACOM CORPORATION, AND SHALL NOT BE USED OR DISCLOSED, IN WHOLE OR IN PART, WITHOUT FIRST OBTAINING THE WRITTEN PERMISSION FROM DYNACOM CORPORATION.

ZONE	REV	DESCRIPTION	DATE	APPV.
-	A	RELEASED.	09/16/2008	E.A.

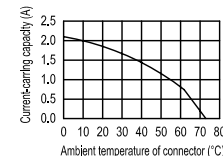
⑥	TP3*10(+)-□□	LP2065	2
⑤	□□□	LS000129	1
④	50 PIN □□ □□□	LH500059	1
③	50 PIN □□□□□	NLH700057-1	1
②	R89D	LP1159	1
①	66BLOCK□□□□	N3066M-350-154	1
NO.	□ □	□ □	QTY

ENVIRONMENTAL CONDITIONS

Temperature Range
Storage -40 to +70°C
Operation -10 to +60°C
Relative Humidity (Operational) : Maximum
Noncondensing 93%

ELECTRICAL

Electrical Insulation Resistance : 500 MΩ
min. @ 100V d.c
Dielectric Withstanding Voltage : 1000V RMS @
60Hz for 1 minute
Spring Wire Contact Resistance :
20 mΩ Max.
IDC Contact Resistance :
2.5 mΩ Max.
Current Rating : as figure.

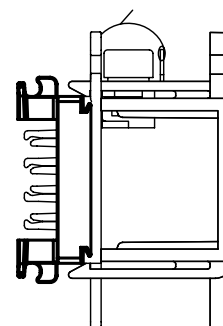
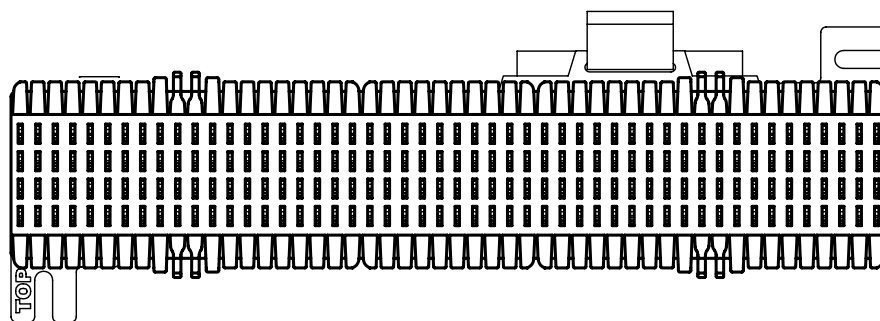
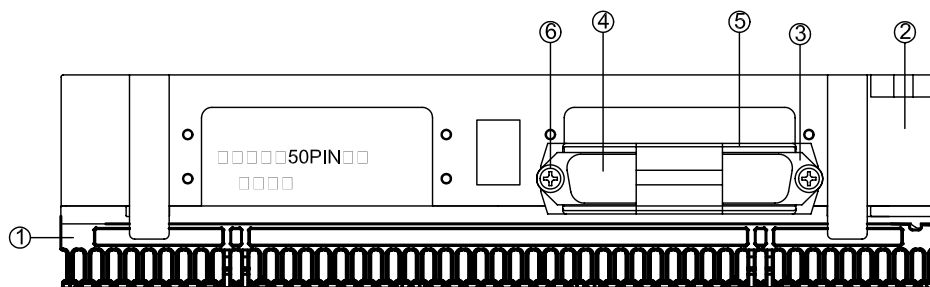


MECHANICAL

Total Contact Force : 800 GRAMS for A 8
Wire Leads Minimum
Retention : 50N (11 lbf) for 60s±5s
Insertion / Extraction Life : 750 Cycles
Minimum
IDC Wire Gauge : 22 ~ 26 AWG

PHYSICAL

Housing/Bezel : High-Impact,
Flame-Retardant Plastic, UL 94V0
Spring Wire : Phosphor Bronze Alloy Plated
With 50 micro-inch of Gold Over 70~100
micro-inch of Nickel
IDC : Brass Plated With 100 micro-inch of
Sn.



e-mail.....sales@dynacomcorp.com

31082 San Antonio Street
Hayward, California 94544

Dimensions: mm - DO NOT SCALE DRAWING

NEXT ASSY-	DRAWN: E.A.	CHECKED: E.A.
TITLE: 66 Block, 50-Pair Block w/Telco Connectors One Male Connector	DWG. NO. 66B1M	SHEET 1 OF 1 REV. A

THE INFORMATION CONTAINED HEREON IS PROPRIETARY AND CONFIDENTIAL TO DYNACOM CORPORATION, AND SHALL NOT BE USED OR DISCLOSED, IN WHOLE OR IN PART, WITHOUT FIRST OBTAINING THE WRITTEN PERMISSION FROM DYNACOM CORPORATION.

ZONE	REV	DESCRIPTION	DATE	APPV.
-	A	RELEASED.	09/16/2008	E.A.

⑥	TP3*10(+)	LP2065	4
⑤		LS000129	2
④	50 PIN	NRLH700065	2
③	50 PIN		2
②	R89D	LP1159	1
①	66BLOCK	N3066M-350-154	1
NO.			Q'TY

ENVIRONMENTAL CONDITIONS

Temperature Range

Storage -40 to +70°C

Operation -10 to +60°C

Relative Humidity (Operational) : Maximum

Noncondensing 93%

ELECTRICAL

Electrical Insulation Resistance : 500 MΩ

min. @ 100V d.c

Dielectric Withstanding Voltage : 1000V RMS @

60Hz for 1 minute

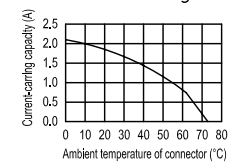
Spring Wire Contact Resistance :

20 mΩ Max.

IDC Contact Resistance :

2.5 mΩ Max.

Current Rating : as figure.



MECHANICAL

Total Contact Force : 800 GRAMS for A 8

Wire Leads Minimum

Retention : 50N (11 lbf) for 60s±5s

Insertion / Extraction Life : 750 Cycles

Minimum

IDC Wire Gauge : 22 ~ 26 AWG

PHYSICAL

Housing/Bezel : High-Impact,

Flame-Retardant Plastic, UL 94V0

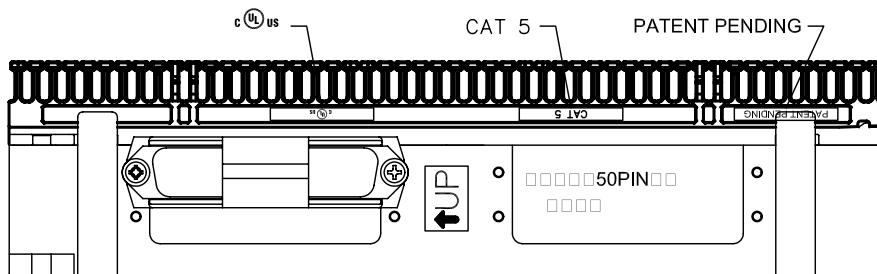
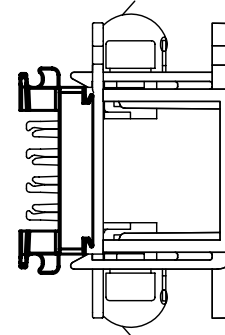
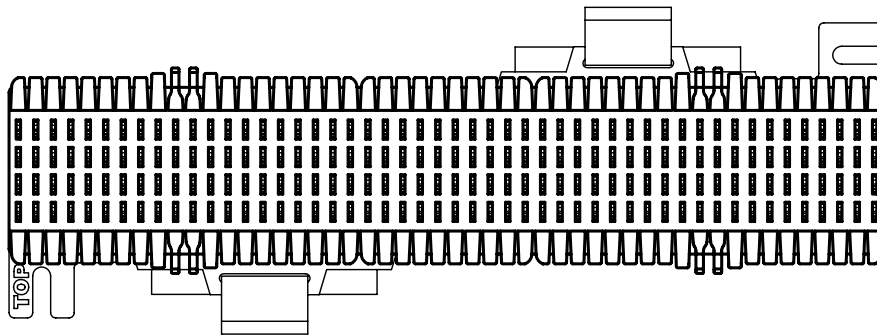
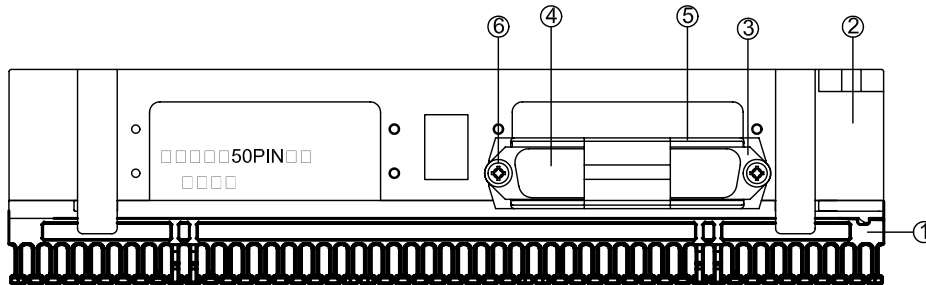
Spring Wire : Phosphor Bronze Alloy Plated

With 50 micro-inch of Gold Over 70~100

micro-inch of Nickel

IDC : Brass Plated With 100 micro-inch of

Sn.



e-mail.....sales@dynacomcorp.com

31082 San Antonio Street

Hayward, California 94544

Dimensions: mm - DO NOT SCALE DRAWING

NEXT ASSY-

DRAWN: E.A.

CHECKED: E.A.

TITLE: 66 Block, 50-Pair Block w/Telco Connectors
Two Female Connectors

DWG. NO. SHEET 1 OF 1

66B2F

REV.

A

THE INFORMATION CONTAINED HEREON IS PROPRIETARY AND CONFIDENTIAL TO DYNACOM CORPORATION, AND SHALL NOT BE USED OR DISCLOSED, IN WHOLE OR IN PART, WITHOUT FIRST OBTAINING THE WRITTEN PERMISSION FROM DYNACOM CORPORATION.

ZONE	REV	DESCRIPTION	DATE	APPV.
-	A	RELEASED.	09/16/2008	E.A.

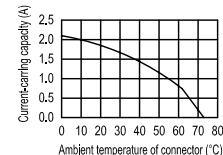
⑥	TP3*10(+)	LP2065	4
⑤		LS000129	2
④	50 PIN	NRLH700065	2
③	50 PIN	LP1159	2
②	R89D	N3066M-350-154	1
①	66BLOCK		1
NO.			Q'TY

ENVIRONMENTAL CONDITIONS

Temperature Range
Storage -40 to +70°C
Operation -10 to +60°C
Relative Humidity (Operational) : Maximum
Noncondensing 93%

ELECTRICAL

Electrical Insulation Resistance : 500 MΩ
min. @ 100V d.c
Dielectric Withstanding Voltage : 1000V RMS @
60Hz for 1 minute
Spring Wire Contact Resistance :
20 mΩ Max.
IDC Contact Resistance :
2.5 mΩ Max.
Current Rating : as figure.

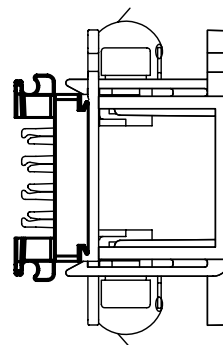
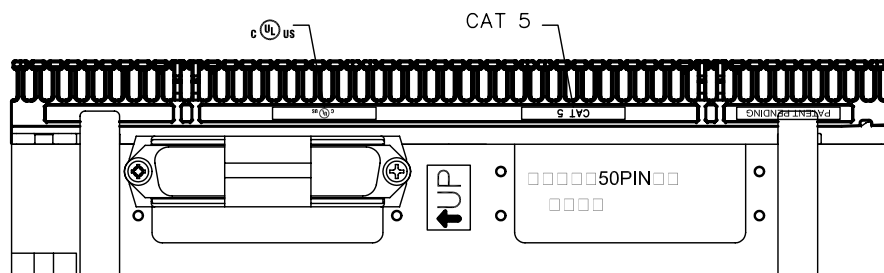
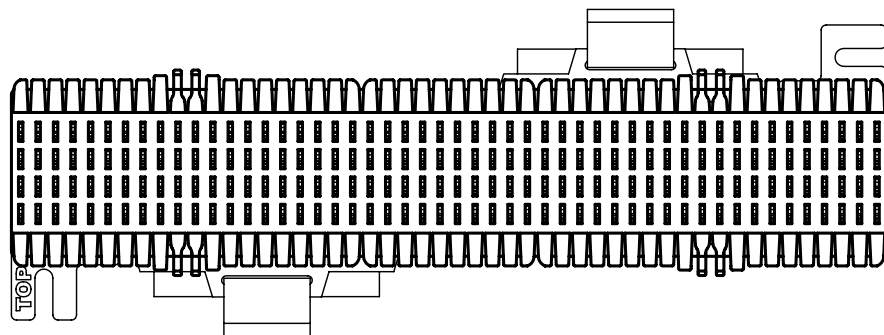
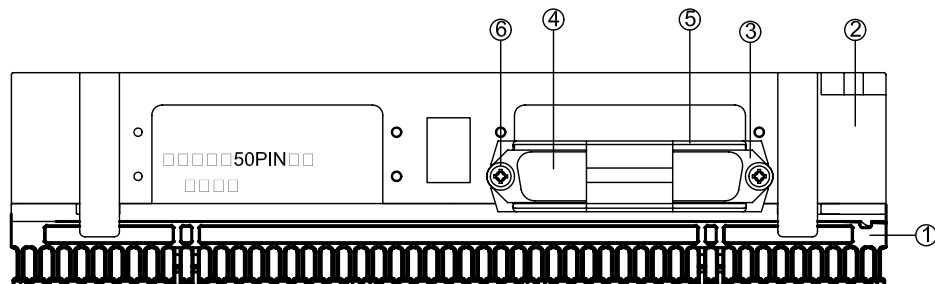


MECHANICAL

Total Contact Force : 800 GRAMS for A 8
Wire Leads Minimum
Retention : 50N (11 lbf) for 60s±5s
Insertion / Extraction Life : 750 Cycles
Minimum
IDC Wire Gauge : 22 ~ 26 AWG

PHYSICAL

Housing/Bezel : High-Impact,
Flame-Retardant Plastic, UL 94V0
Spring Wire : Phosphor Bronze Alloy Plated
With 50 micro-inch of Gold Over 70~100
micro-inch of Nickel
IDC : Brass Plated With 100 micro-inch of
Sn.



e-mail.....sales@dynacomcorp.com

31082 San Antonio Street
Hayward, California 94544

Dimensions: mm - DO NOT SCALE DRAWING

NEXT ASSY-	DRAWN: E.A.	CHECKED: E.A.
TITLE: 66 Block, 50-Pair Block w/Telco Connectors Two Male Connectors	DWG. NO. 66B2M	SHEET 1 OF 1 REV. A