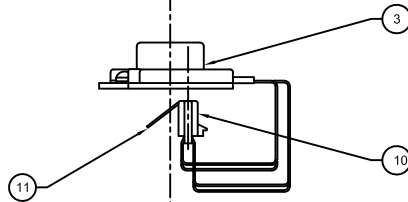
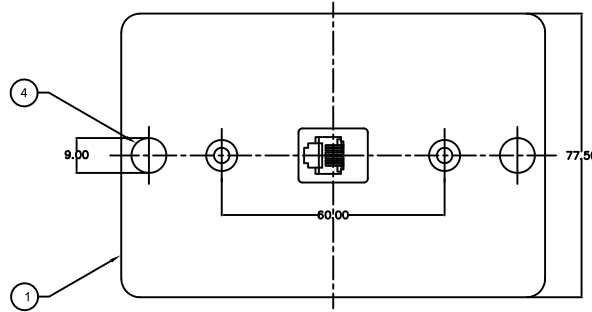
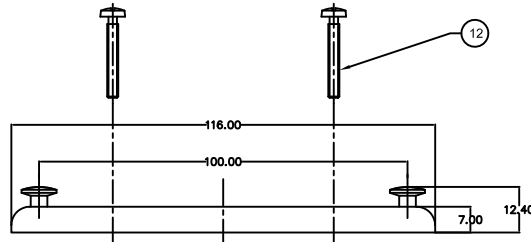
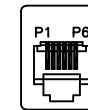
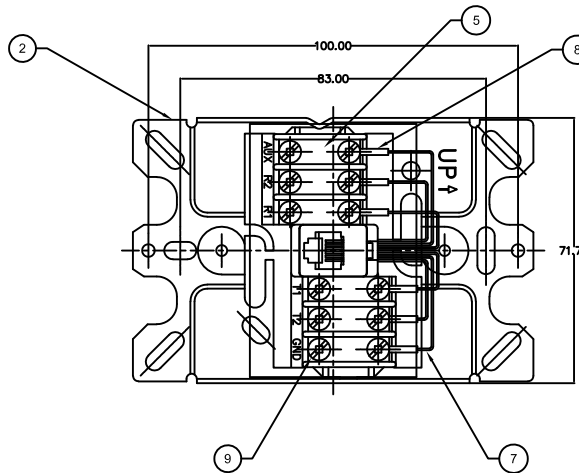


THE INFORMATION CONTAINED HEREON IS PROPRIETARY AND CONFIDENTIAL TO DYNACOM CORPORATION, AND SHALL NOT BE USED OR DISCLOSED, IN WHOLE OR IN PART, WITHOUT FIRST OBTAINING THE WRITTEN PERMISSION FROM DYNACOM CORPORATION.

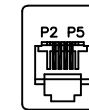
ZONE	REV	DESCRIPTION	DATE	APPV.
-	A	RELEASED	09/16/2008	E.A.
-	B	REDREW DRAWING	04/01/2021	E.A.



ITEM	QTY	DESCRIPTION	REMARK
13	2	SCREW	SAE 1010 (NICKEL PLATING)
12	2	SCREW	SAE 1010 (NICKEL PLATING)
11	4, 6	SPRING WIRE	30u" HARD GOLD OVER 100u" NICKEL
10	1	INSERT	ABS UL94V-0
9	8, 12	SCREW	SAE 1010 (NICKEL PLATING)
8	4, 6	TERMINAL	BRASS (TIN PLATING)
7	4, 6	LEAD WIRE	UL-1061
6	1	FILM	PVC
5	4, 6	RIVET	BRASS (TIN PLATING)
4	2	RIVET	SAE 1010, 50u" COPPER BASE, 100u" NICKEL PLATE
3	1	JACK HOUSING	ABS UL94V-0
2	1	BRACKET	SAE 1010 (ZINC PLATING)
1	1	COVER	SUS 303



6P6C



6P4C

LOCATION	COLOR	LOCATION
GND	YELLOW	P5
T2	BLUE	P6
T1	GREEN	P4
R1	RED	P3
R2	WHITE	P1
AUX	BLACK	P2



e-mail.....sales@dynacomcorp.com

31082 San Antonio Street  
Hayward, California 94544

Dimensions: mm

NEXT ASSY-

DRAWN: A.Z.

CHECKED: E.A.

TITLE:

Stainless Steel Wallphone Wallplate

DWG. NO.

26630AD-Y

SHEET 1 OF 1

REV.

A