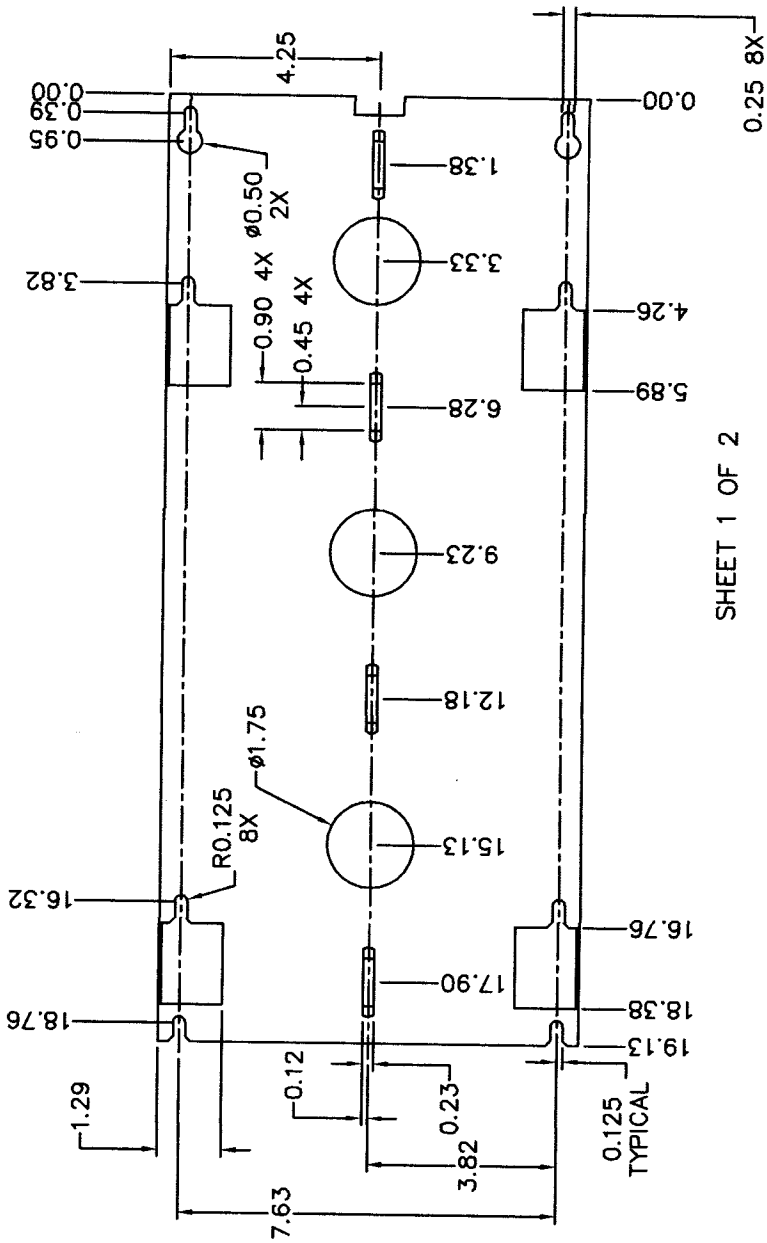
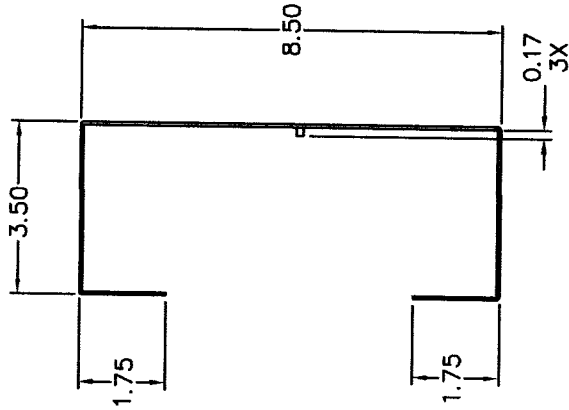
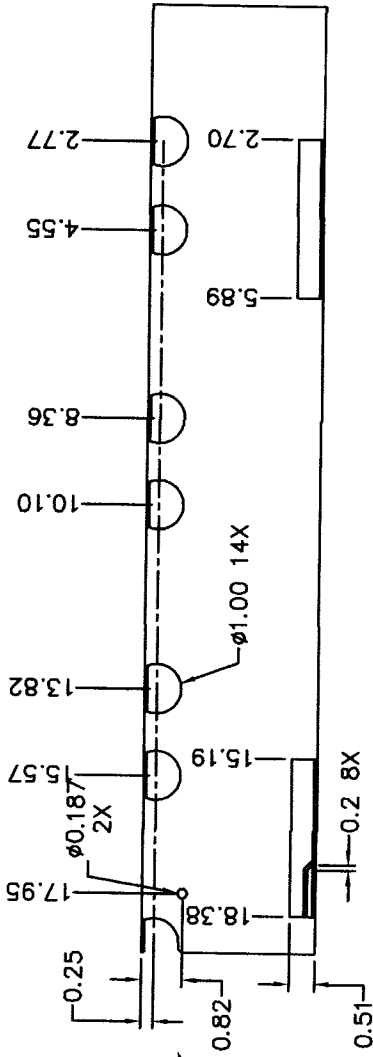


THE INFORMATION CONTAINED HEREON IS PROPRIETARY AND CONFIDENTIAL TO DYNACOM CORPORATION. AND SHALL NOT BE USED OR DISCLOSED, IN WHOLE OR IN PART WITHOUT FIRST OBTAINING THE WRITTEN PERMISSION OF DYNACOM CORPORATION.

NOTES:

1. MATERIAL: 16 GA. (0.060) COLD ROLLED STEEL.
2. FINISH: BLACK, SEMI GLOSS, MED TEXTURE POWDER COAT.

DETAIL A
SEE SHEET 2



SHEET 1 OF 2



e-mail.....sales@dynamcomcorp.com

www.dynamcomcorp.com

TOLS. X=+/- 0.030, .XX=+/- 0.010, .XXX=+/-0.005, ANGLES=+/-0.5 DEG.

NEXT ASSY: - DRAWN: E.A. 03/12/02

CHECKED: Joe Tornello

TITLE: 300 Pair Verticle Wire Manager w/Trough

DWG. NO. 110VWM-300

REV. A

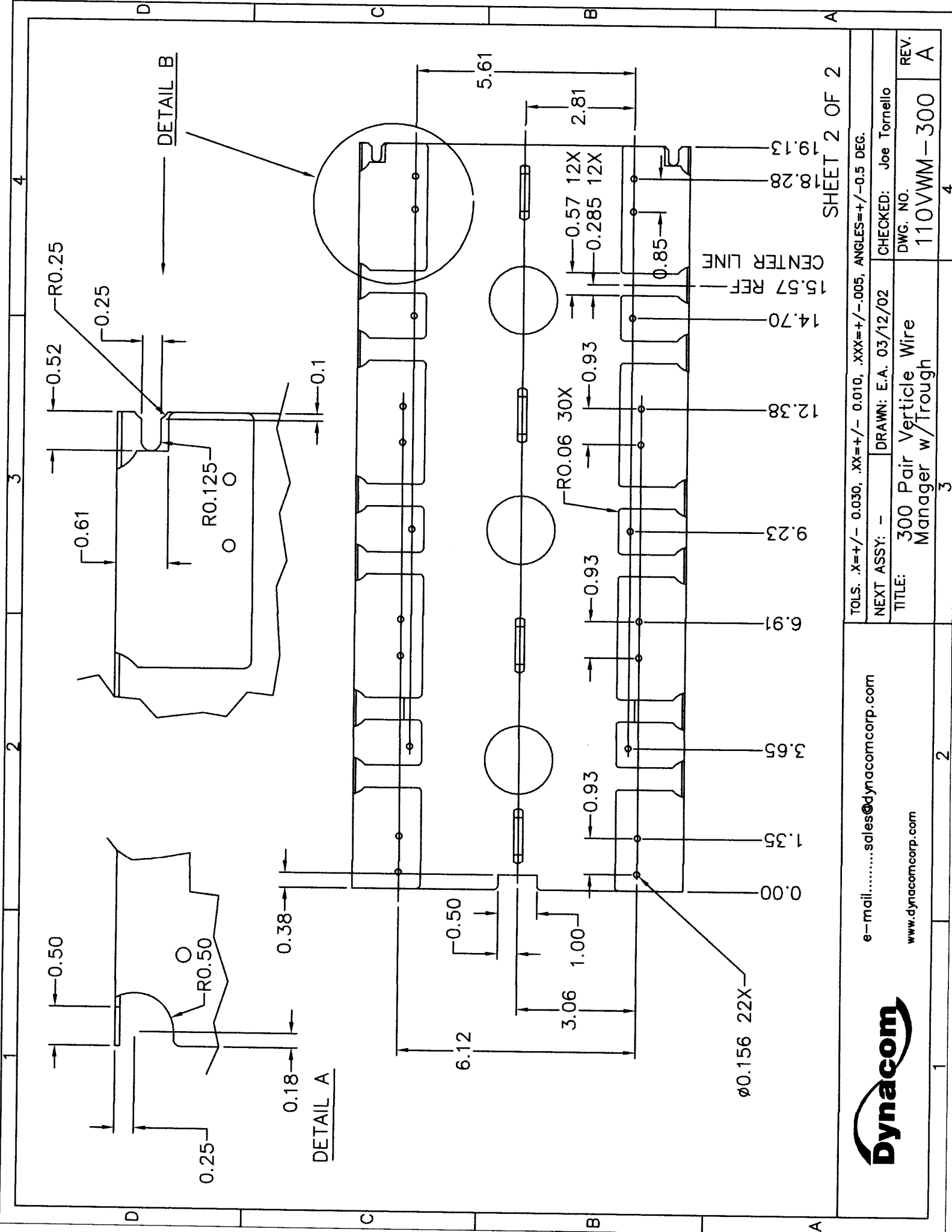
DESCRIPTION

INITIAL RELEASE

ZONE REV. A

DATE 03/12/02

APPV. E.A.



SHEET 2 OF 2

TOLS. X=+/- 0.030, .XX=+/- 0.010, .XXX=+/-0.005, ANGLES=+/-0.5 DEG.

NEXT ASSY: - DRAWN: E.A. 03/12/02 CHECKED: Joe Tornello

TITLE: 300 Pair Verticle Wire Manager w/Trough DWG. NO. 110VWM-300 REV. A

e-mail.....sales@dynacomcorp.com

www.dynacomcorp.com



