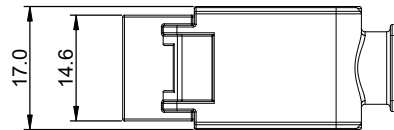
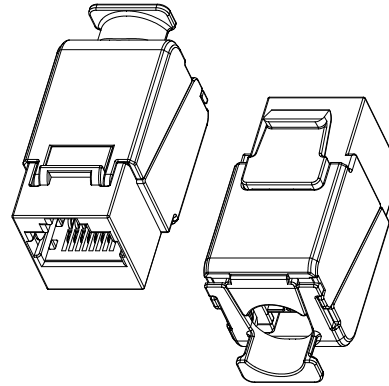
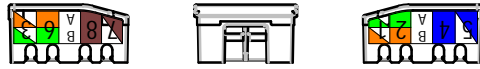


1 THE INFORMATION CONTAINED HEREON IS PROPRIETARY AND CONFIDENTIAL TO DYNACOM CORPORATION. AND SHALL NOT BE USED OR DISCLOSED, IN WHOLE OR IN PART WITHOUT FIRST OBTAINING THE WRITTEN PERMISSION OF DYNACOM CORPORATION. SPECIFICATIONS SUBJECT TO CHANGE WITHOUT NOTICE.

ZONE	REV.	DESCRIPTION	DATE	APPV.
-	A	INITIAL RELEASE	10/01/2021	E.A.
-	B			
-	C			
-	D			



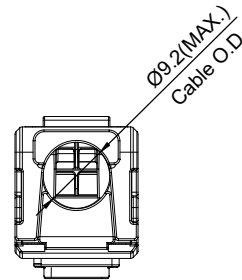
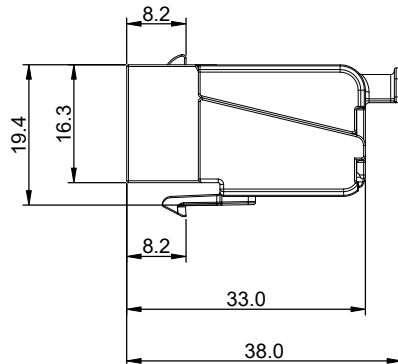
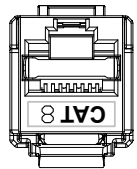
TRANSMISSION PERFORMANCE

When used with 400PS-C8 plug and specified cables, meet all requirements specified in channel requirement of:

ISO/IEC 11801-1, Class I
ANSI/TIA-568.2-D, Category 8 (30M)

ELECTRICAL

Electrical Insulation Resistance : 500 MΩ min. @ 100V d.c
Dielectric Withstanding Voltage : 1000V d.c. or a.c. Peak Contact to Contact @ 60Hz for 1 minute. 1500V d.c. or a.c. Peak; all contacts connected together to shield @ 60Hz for 1 minute.

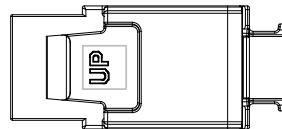


MECHANICAL

Insertion / Extraction Life : 750 Cycles Minimum
IDC Wire Gauge : Re-usable IDC'S can be terminated 20 times with wires from 26 AWG through 22 AWG

PHYSICAL

Housing : Zinc-alloy fully shielded.
Spring Wire : Phosphor Bronze Alloy Plated With 50 micro-inch of Gold
IDC : Phosphor Bronze Alloy With 100 micro-inch 100% Sn.



e-mail...sales@dynacomcorp.com
www.dynacomcorp.com

DIMENSIONS: MM

NEXT ASSY: -

DRAWN: E.A.

CHECKED: A. L.

TITLE

CAT8 SHIELDED TOOL-LESS JACK

DWG. NO.

10608-C8

SHEET 1 OF 1

REV.

A