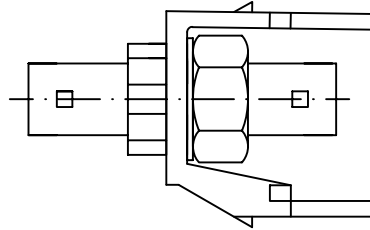
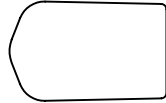
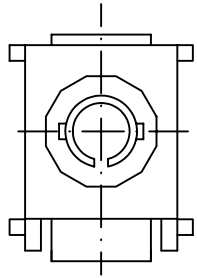


THE INFORMATION CONTAINED HEREON IS PROPRIETARY AND CONFIDENTIAL TO DYNACOM CORPORATION AND SHALL NOT BE USED OR DISCLOSED, IN WHOLE OR IN PART WITHOUT FIRST OBTAINING THE WRITTEN PERMISSION OF DYNACOM CORPORATION. SPECIFICATIONS ARE SUBJECT TO CHANGE WITHOUT NOTICE.



AVAILABLE COLORS: ELECTRICAL IVORY,  
ELECTRICAL WHITE

MATERIAL:

ST ADAPTER BODY: ZINC ALLOY DIE CASTING  
WITH NICKEL PLATING

RETAINER: ZINC ALLOY DIE CASTING WITH NICKEL PLATING

SLEEVE: PHOSPHOR BRONZE: ZIRCONIA(CERAMIC)

DUST CAP: ENGINEERING PLASTIC(PVC)

WASHER: STEEL WITH NICKEL PLATING

NUT: BRASS WITH NICKEL PLATING

HOUSING: ABS UL94V0

△ SPECIFICATION (SM SLEEVE)

INSERTION LOSS(dB)	
TYP/MAX	0.15/0.3
IL (dB)500 MATINGS	0.1
TEMP RANGE (°C)	-40 TO +85
ALIGNMENT SLEEVE	
RETENTION FORCE (gf)	300~600

SPECIFICATION (MM SLEEVE)

INSERTION LOSS(dB)	
TYP/MAX	0.2/0.4
ΔIL (dB)500 MATINGS	0.1
TEMP RANGE (°C)	-40 TO +85
ALIGNMENT SLEEVE	
RETENTION FORCE (gf)	200~600

TITLE: ST Fiber Optic Module  
PART#: 10600-ST-XXX