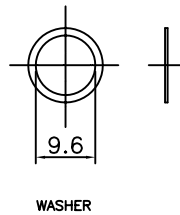
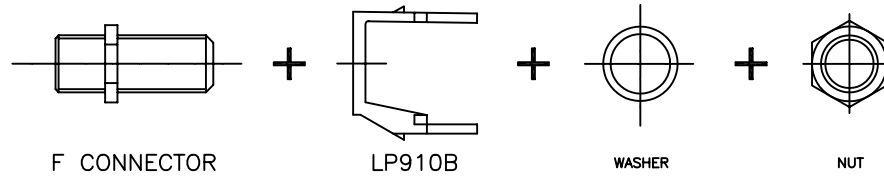


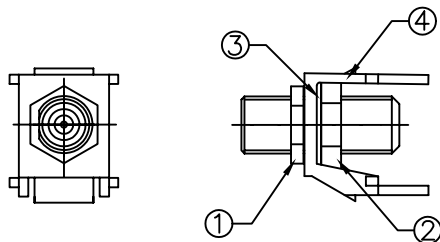
1 THE INFORMATION CONTAINED HEREON IS PROPRIETARY AND CONFIDENTIAL TO DYNACOM CORPORATION, AND SHALL NOT BE USED OR DISCLOSED, IN WHOLE OR IN PART, WITHOUT FIRST OBTAINING THE WRITTEN PERMISSION FROM DYNACOM CORPORATION.

2 SPECIFICATIONS SUBJECT TO CHANGE WITHOUT NOTICE.

3		4		
ZONE	REV	DESCRIPTION	DATE	APPV.
-	A	RELEASED	7/16/07	E.A.
				E.A.



4	SPACER	ABS 94V-0	1	LP910B
3	WASHER	METAL	1	OD=9.6mm
2	NUT	METAL	1	W3/8-32 UNEF
1	F CONNECTOR	METAL	1	NICKEL PLATING
No.	PART NAME	MAT'L	Q'TY	REMARK



e-mail.....info@dynacomcorp.com
31082 San Antonio Street
Hayward, CA 94544

Dimensions: mm - DO NOT SCALE DRAWING

NEXT ASSY-

DRAWN: E.A. 7/16/07

CHECKED: E.A.

TITLE:

F-Type Coupler Module (1 GHz)

DWG. NO. SHEET 1 OF 1

10600-F1G-XX

REV.

A